



---

## New Construction

PROGRESS UPDATE

August 2023

---

# Southeast Pre K-12 School





## PROJECT SUMMARY

### Site Development & Landscaping

#### August 2023 Progress

- Site
- Utilities
  - Gas Service Line Installation – 90%
  - Gas House Line Installation – 90%
  - Site Light Poles Installation – 90%

#### Upcoming Progress

- Form and Pour Generator and Chiller Pads
- Connect Gas House Line to Gas Service Line



## PROJECT SUMMARY

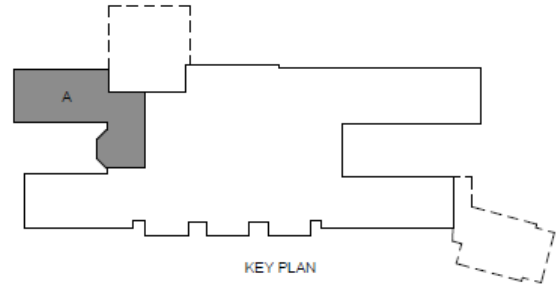
### Area A

#### August 2023 Progress

- First Floor MEP Overhead Ongoing– 100%
- Second Floor MEP Overhead Ongoing– 100%
- Second Floor Exterior Metal Framing– 100%
- Second Floor Interior Framing– 100%
- Set Hollow Metal Frames– 85%
- Roof Blocking– 100%
- Set Metal Deck– 100%
- Temp Roof Dry-in– 90%
- Cavity Insulation and Brick Veneer– 20%
- Spray Foam Insulation– 100%

#### Upcoming Progress

- Set Hollow Metal Frames
- Set Clerestory Windows
- Continue Cavity Insulation and Brick Veneer



## PROJECT SUMMARY

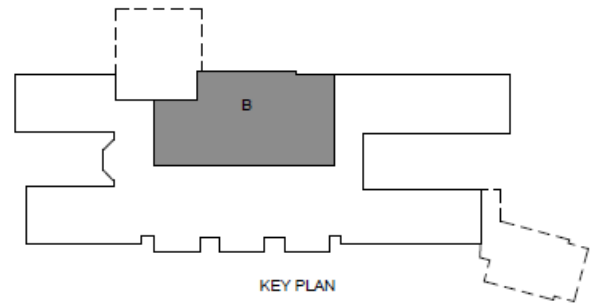
### Area B

#### August 2023 Progress

- Foundations – 100%
- Below Grade CMU– 100%
- Branch Conduit– 95%
- Pour Slab on Grade– 70%
- Structural Steel – 85%
- Bearing CMU – 100%
- Precast Planks – 100%
- Chilled Water Piping– 30%

#### Upcoming Progress

- Continue Slab on Grade
- Continue Setting Steel
- Set HVAC Units
- Continue Chilled Water Piping

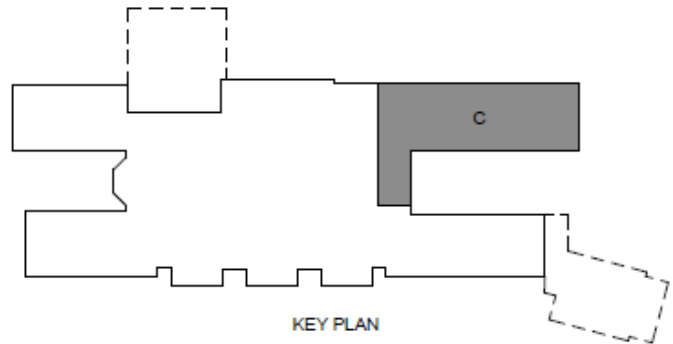


## PROJECT SUMMARY

### Area C

#### August 2023 Progress

- Set Trusses– 100%
- Second Floor Interior Metal Framing– 50%
- Set Metal Deck– 100%
- Temp Roof Dry-in– 60%
- VAV Boxes Installation– 90%
- Roof Blocking– 100%



#### Upcoming Progress

- Begin MEP Piping
- Begin Densglass in Corridor Ceiling
- Continue Temp Roof Dry-in
- Second Floor Interior Metal Framing



## PROJECT SUMMARY

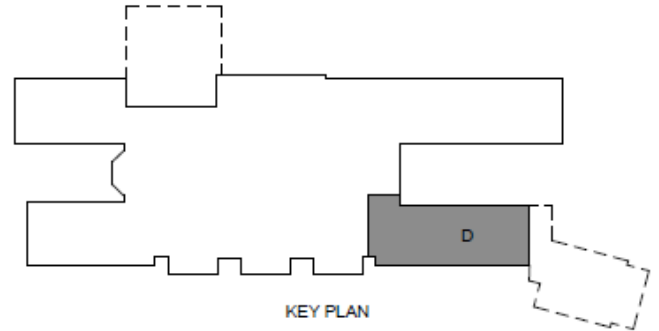
### Area D

#### August 2023 Progress

- Exterior Bearing CMU– 90%
- Set Angle Clips– 50%

#### Upcoming Progress

- Exterior Bearing CMU
- MEP Rough – In
- Continue Setting Angle Clips
- Set Trusses
- Set Structural Steel

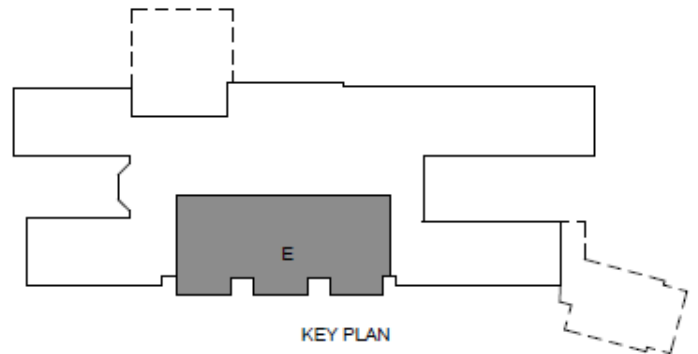


## PROJECT SUMMARY

### Area E

#### August 2023 Progress

- CMU to Bearing– 90%
- First Floor MEP Overhead Rough-in– 90%
- Set Structural Steel – 70%
- Set Bowstrings Metal Deck– 50%
- Set HS Gym Metal Deck– 80%
- Pour MS Gym Slab on Grade – 100%



#### Upcoming Progress

- Continue CMU to Bearing
- Continue Setting Structural Steel
- Continue MEP Overhead Rough-in
- Pour Partial Admins Slab on Grade
- Complete Setting Metal Deck

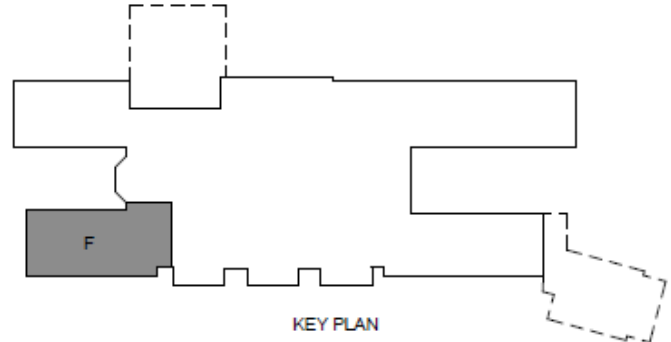


## PROJECT SUMMARY

### Area F

#### August 2023 Progress

- Temp Roof Dry-in- 90%
- Roof Blocking- 100%
- Set Metal Deck- 100%
- Exterior Metal Framing- 100%
- Cavity Insulation and Brick Veneer- 10%
- Spray Foam Insulation- 100%
- HVAC Units Installation- 100%



#### Upcoming Progress

- Cavity Insulation and Brick Veneer





## PROJECT SUMMARY

### Area G

#### August 2023 Progress

- Bearing CMU – 100%
- Set Structural Steel – 90%

#### Upcoming Progress

- Set Trusses

